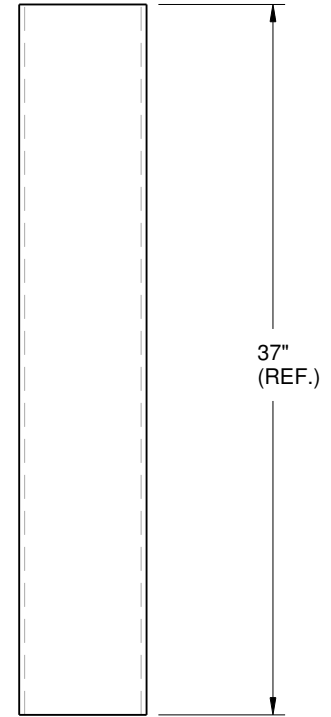
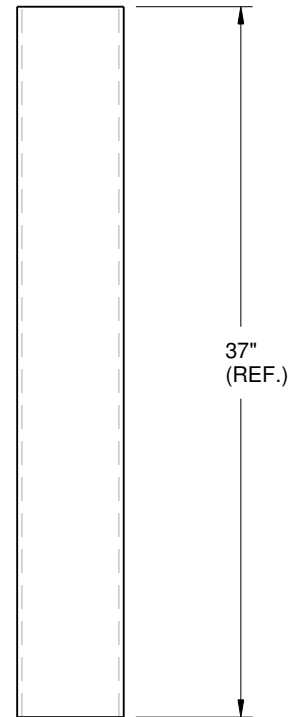
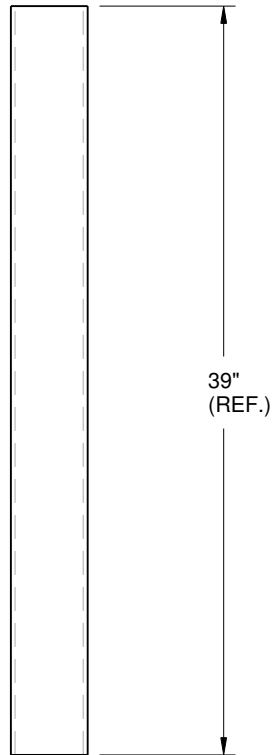
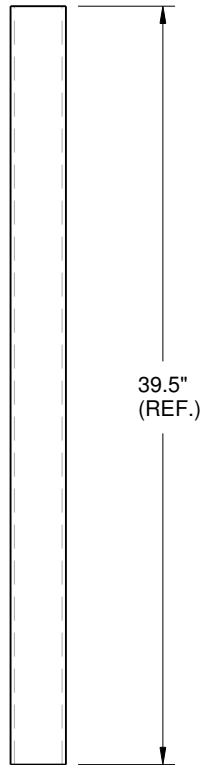
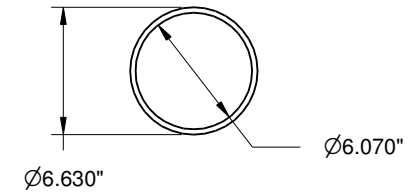
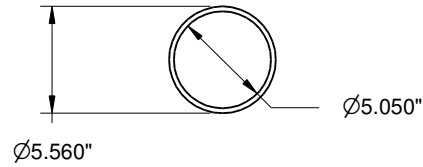
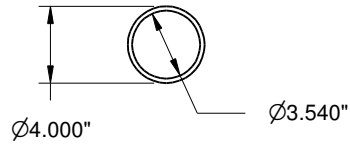
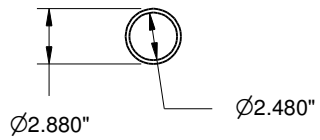


ERW STEEL PIPE
 OUTSIDE SEEM GROUND SMOOTH
 POLYESTER POWDER COAT
 OUTDOOR RATED

RAL 1018 ZINC YELLOW, 150µm
 EXTERIOR AND CUT ENDS



SLOWSTOP 3"
 (ANSI 2.5" SCHEDULE 40)
 SS3Y-PIPE-39.5

SLOWSTOP 4"
 (ANSI 3.5" SCHEDULE 40)
 SS4Y-PIPE-39

SLOWSTOP 5"
 (ANSI 5" SCHEDULE 40)
 SS5Y-PIPE-37

SLOWSTOP 6"
 (ANSI 6" SCHEDULE 40)
 SS6Y-PIPE-37



CONFIDENTIAL & PROPRIETARY

The drawing on this print and the information therewith are property of SlowStop Guarding Systems, LLC, and shall not be used or discussed in whole or in part without the consent of SlowStop Guarding Systems, LLC.

4955 STOUT DR. · SAN ANTONIO, TX 78219 · (800) 736-5256

| | | | |
|------------------|--------------------------------|--|-----------------|
| SIZE A | PART NO. | DWG. SLOWSTOP BOLLARD PIPE DIMENSIONS | REV E |
| SCALE | SLOWSTOP GUARDING SYSTEMS, LLC | DATE | 10-JUL-2017 |